

# High Profile Series™ Baffle Ceiling System



**HunterDouglas**   
Ceiling & Wall Products  
exclusively from CertainTeed



Project: PHX Sky Train™  
Location: Phoenix, AZ  
Architect: HOK  
Product: High Profile Series™ Straight  
Photo credit: Bob Perzel

---

High Profile Series™ from Hunter Douglas Ceilings & Walls features robust extruded aluminum beams that can be configured into screens, rafters, and an unlimited range of unique wall and ceiling elements – precision curves, angles, joins, and more. Available with many support options, including traditional threaded rods, Unistrut® supports, and aircraft cables for lower visibility. Expert, in-house design and engineering support helps meet design intent, optimize material cost, and reduce installation effort.

---

Cover image  
Project: Target Center  
Location: Minneapolis, MN  
Architect: Alliance and Sink Combs Dethlefs  
Product: High Profile Series™ Frameworks  
Photo credit: Bob Perzel

## KEY FEATURES

---

- Extruded aluminum beams
- Straight baffles
- Horizontally curved baffles
- Vertically curved baffles
- Frameworks (custom designed & engineered)
- Variety of finishes
- Plenum access
- Exterior custom applications
- Made in America

## PROFILES

---

### Aero profile

- 1-5/8" x 6-3/8"

### Sweep profile

- 1-3/4" x 6-3/8"

### Beam profile

- 1-1/2" x 4-3/8"
- 1-1/2" x 6-3/8"
- 1-1/2" x 8-3/8"
- 2" x 4"
- 2" x 6"
- 2" x 8"
- 4" x 4"

### Beam- Open

- 4" x 4"

### Taper

- 1-1/2" x 8"

### Crescent

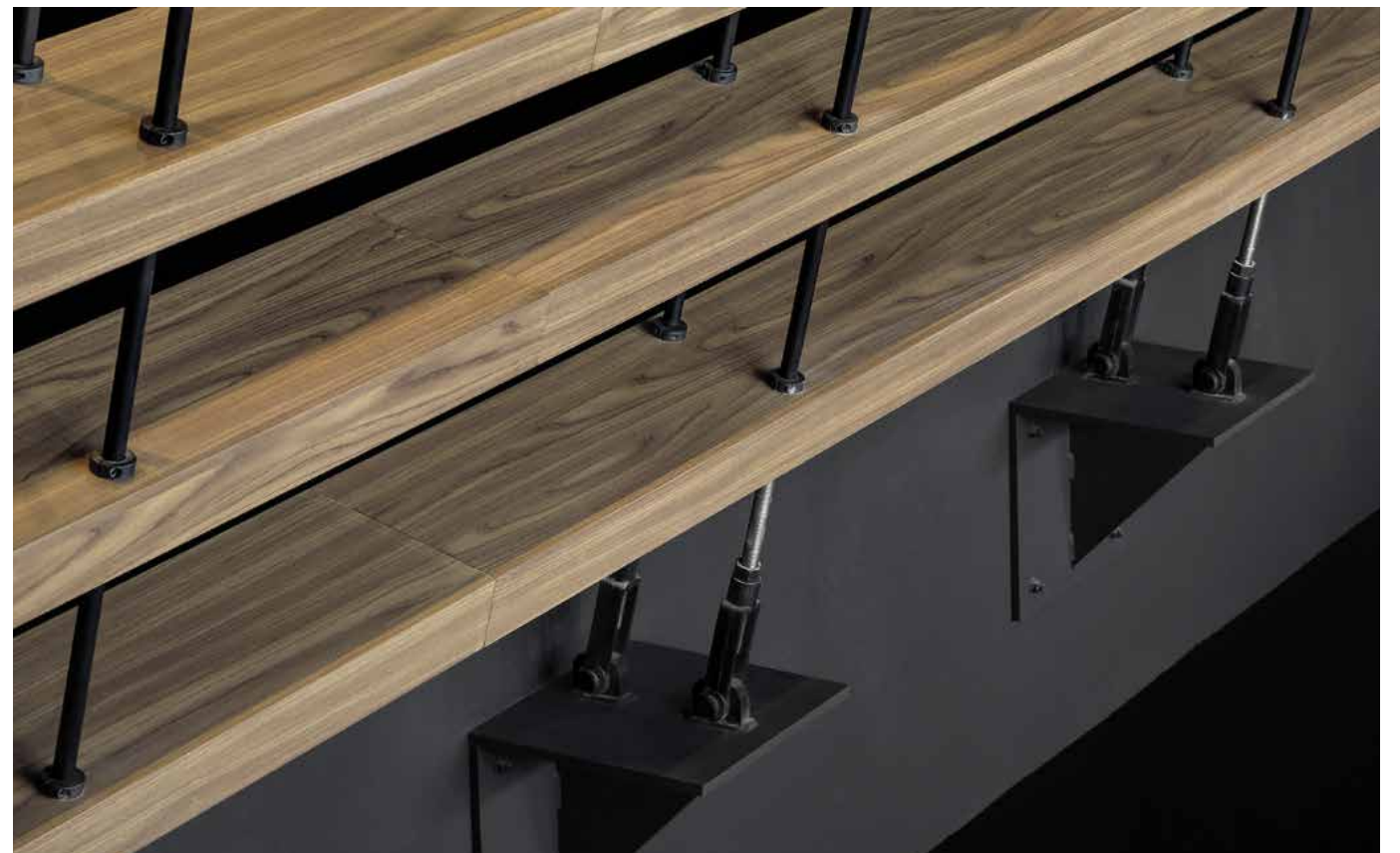
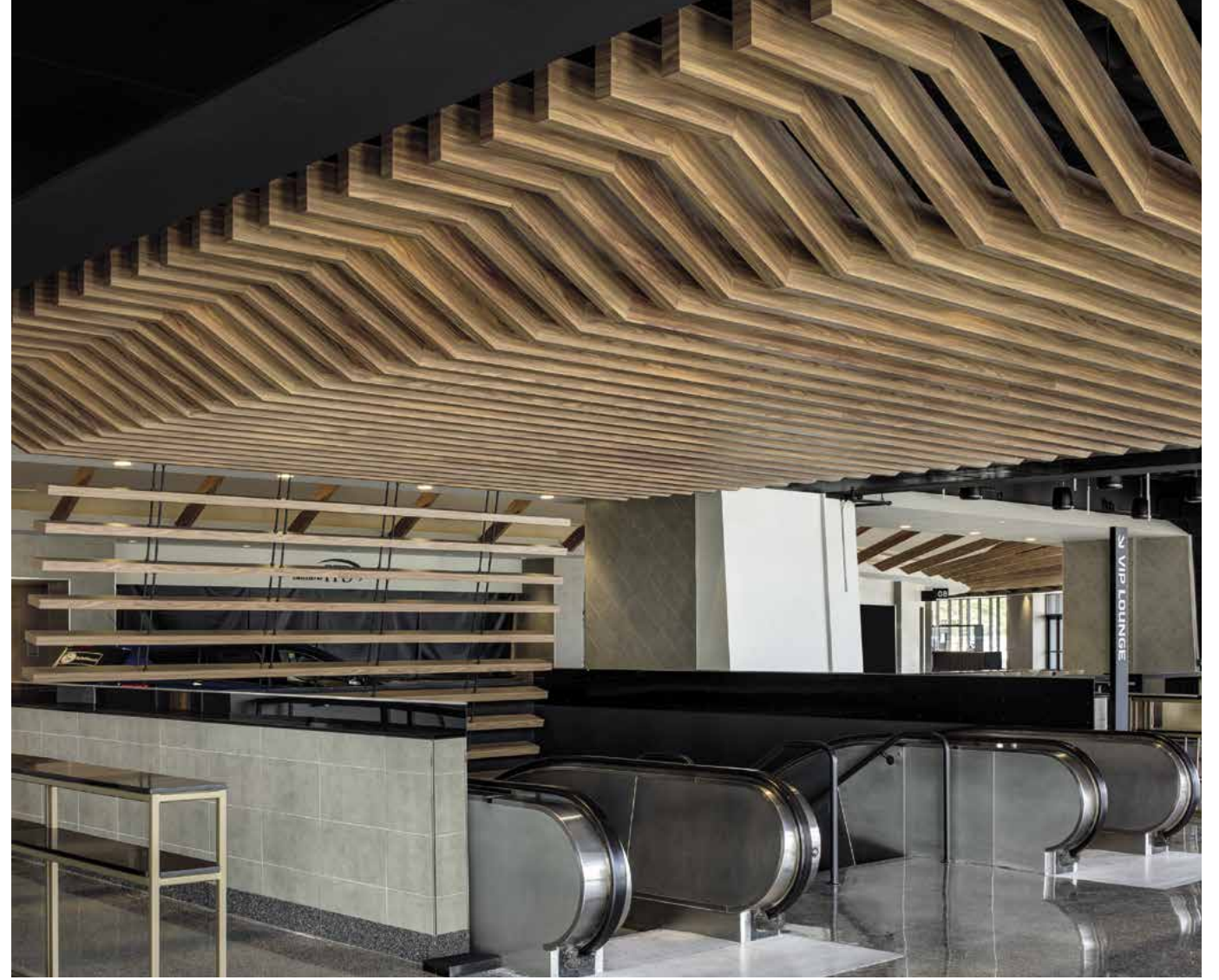
- 4" x 6-3/8"

Note: Client-specific shapes and finishes available



Project: Avery Dennison  
Location: Glendale, CA  
Architect: HOK  
Product: High Profile Series™ Horizontally Curved  
Photo credit: Josh Soskin

Project: Nassau Veterans Memorial Coliseum  
Location: Uniondale, NY  
Architect: Gensler  
Product: High Profile Series™ Frameworks  
Photo credit: Richard Cadan



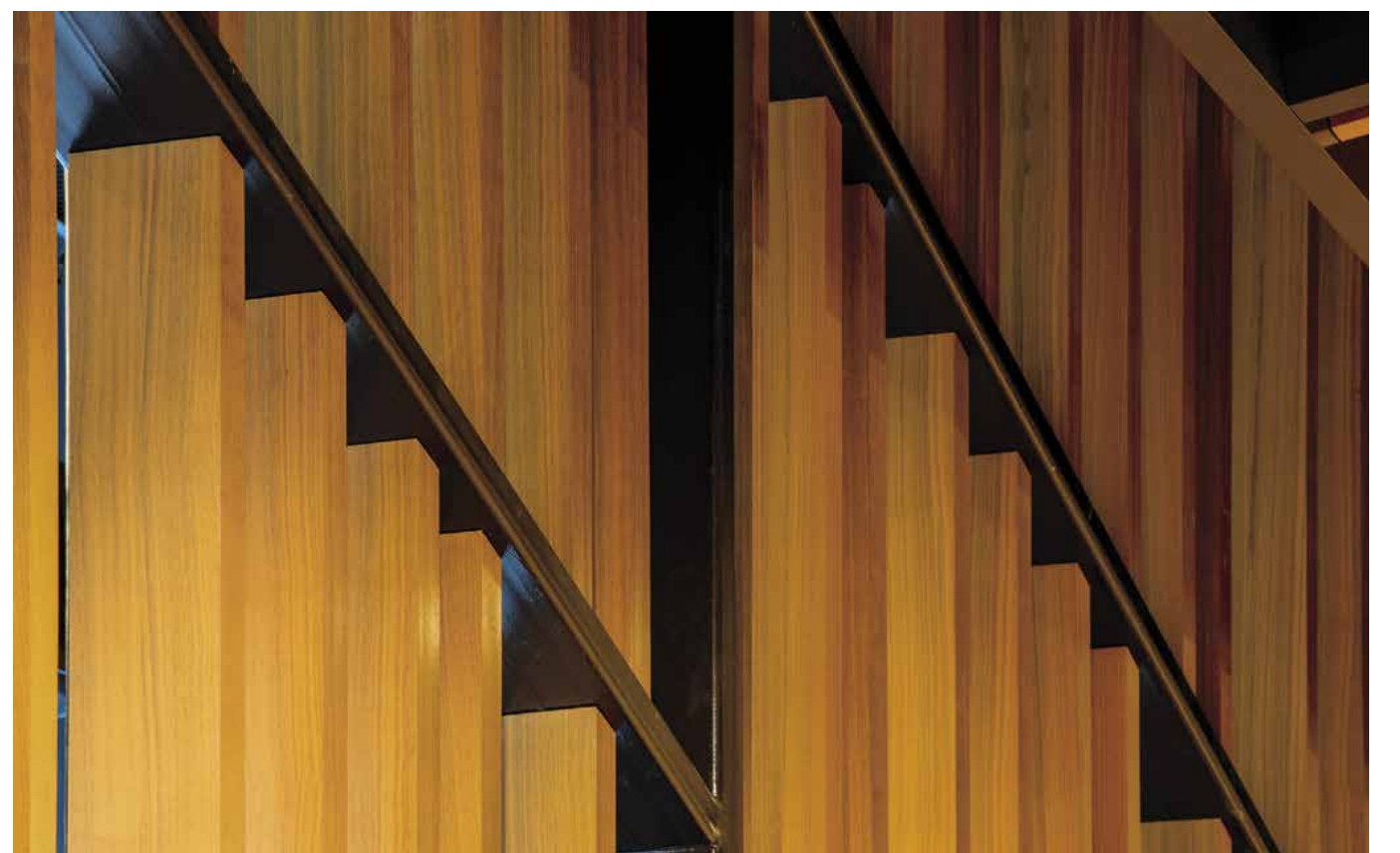
Project: Target Center – Courtside Club  
Location: Minneapolis, MN  
Architect: Alliance and Sink Combs Dethlefs  
Product: High Profile Series™ Frameworks  
Photo credit: Bob Perzel





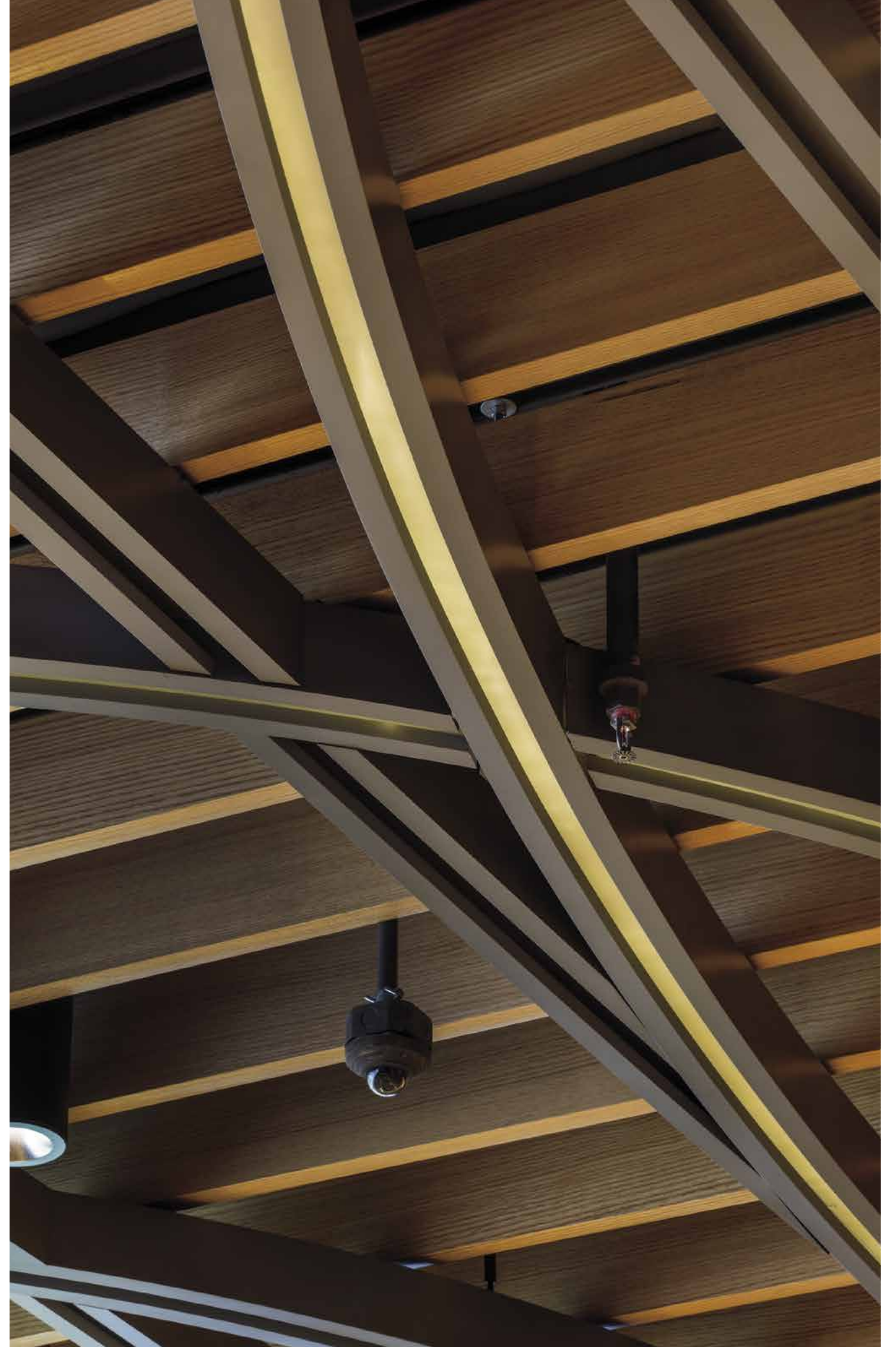
Project: Target Center – Courtside Club  
Location: Minneapolis, MN  
Architect: Alliance and Sink Combs Dethlefs  
Product: High Profile Series™ Frameworks  
Photo credit: Bob Perzel

Project: Target Center – Courtside Club  
Location: Minneapolis, MN  
Architect: Alliance and Sink Combs Dethlefs  
Product: High Profile Series™ Frameworks  
Photo credit: Bob Perzel





Project: Coffeehouse  
Location: New York, NY  
Product: High Profile Series™ Straight & Horizontally Curved  
Photo credit: Bob Perzel

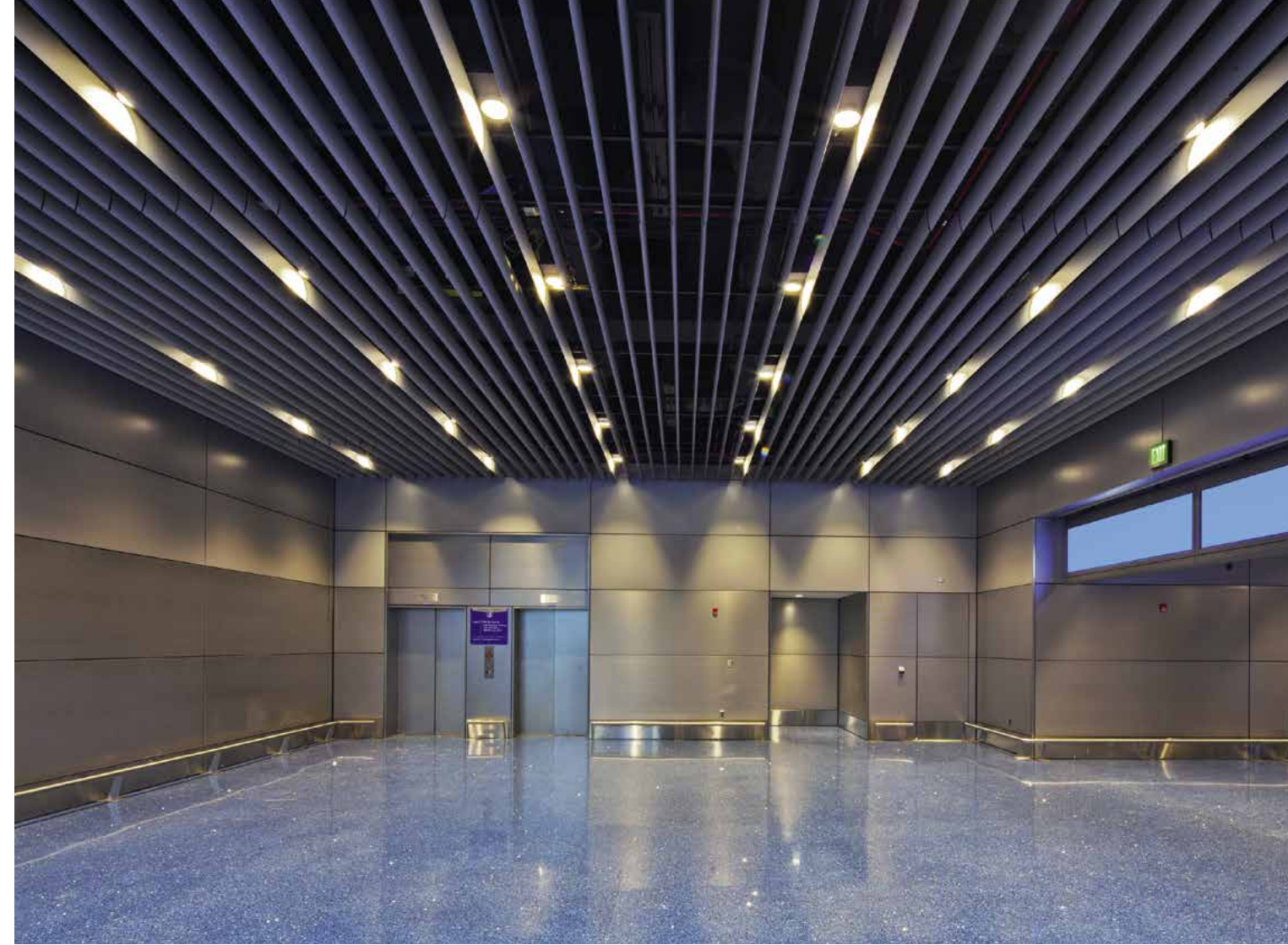
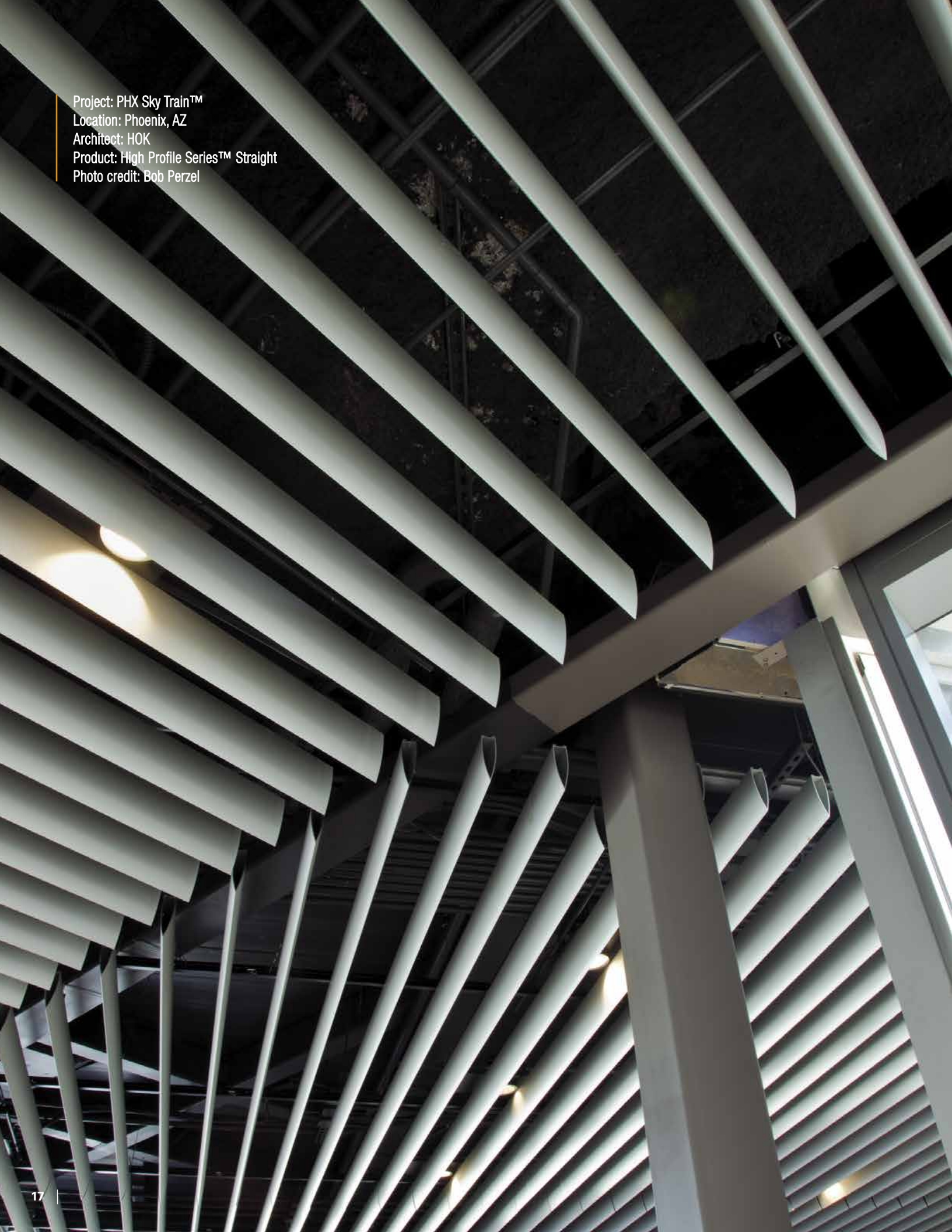




Project: Jacobs Medical Ctr., UC San Diego Health  
Location: San Diego, CA  
Architect: Cannon Design  
Product: High Profile Series™ Vertically Curved  
Photo credit: Taube Photography



Project: PHX Sky Train™  
Location: Phoenix, AZ  
Architect: HOK  
Product: High Profile Series™ Straight  
Photo credit: Bob Perzel





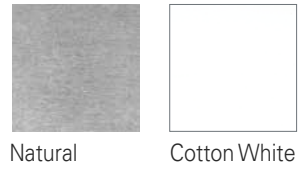
Project: Sports Stadium Suites  
Location: Santa Clara, CA  
Architect: HNTB, Kansas City  
Product: High Profile Series™ Straight  
Photo credit: Bob Perzel



Project: Doak Campbell Stadium, Suites at FSU  
Location: Tallahassee, FL  
Architect: Rosser Int'l, Inc., Elliott Marshall Innes  
Product: High Profile Series™ Straight  
Photo credit: Bob Perzel

# COLORS & FINISHES

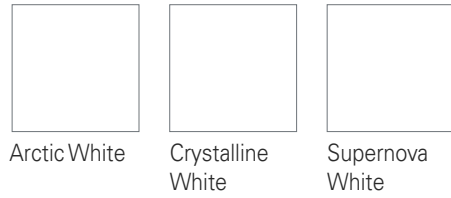
## STANDARD PAINT COLORS



## COLORS



## WHITE FINISH OPTIONS | Powder-coat finish

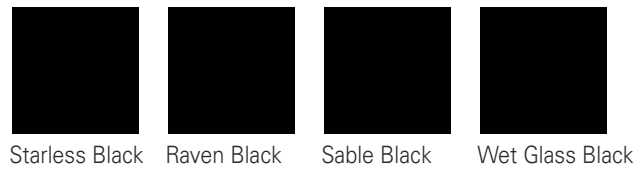


## DAYLIGHTING PAINT FINISH

Powder-coat paint finish offering LRV 96; 3% low gloss finish.



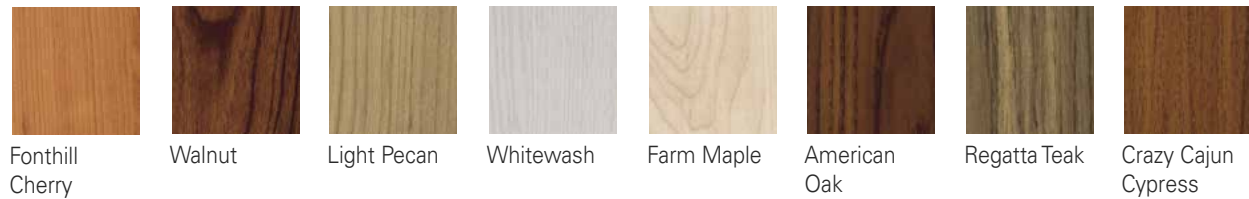
## BLACK FINISH OPTIONS | Powder-coat finish



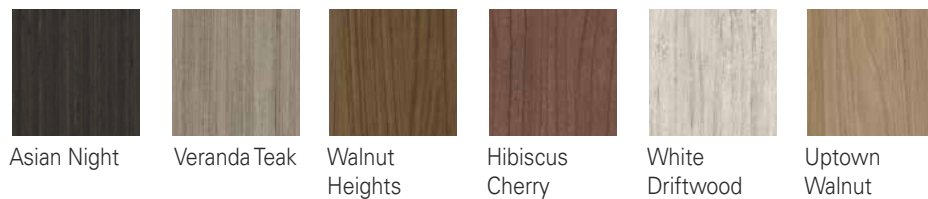
## STANDARD WOOD VENEER OPTIONS\* | Real wood veneer (interior only). Formaldehyde-free, Class A composite panel.



## DECORATED WOOD-LOOK OPTIONS\* | Powder-coat paint finish (interior and exterior). Formaldehyde-free, Class A composite panel.



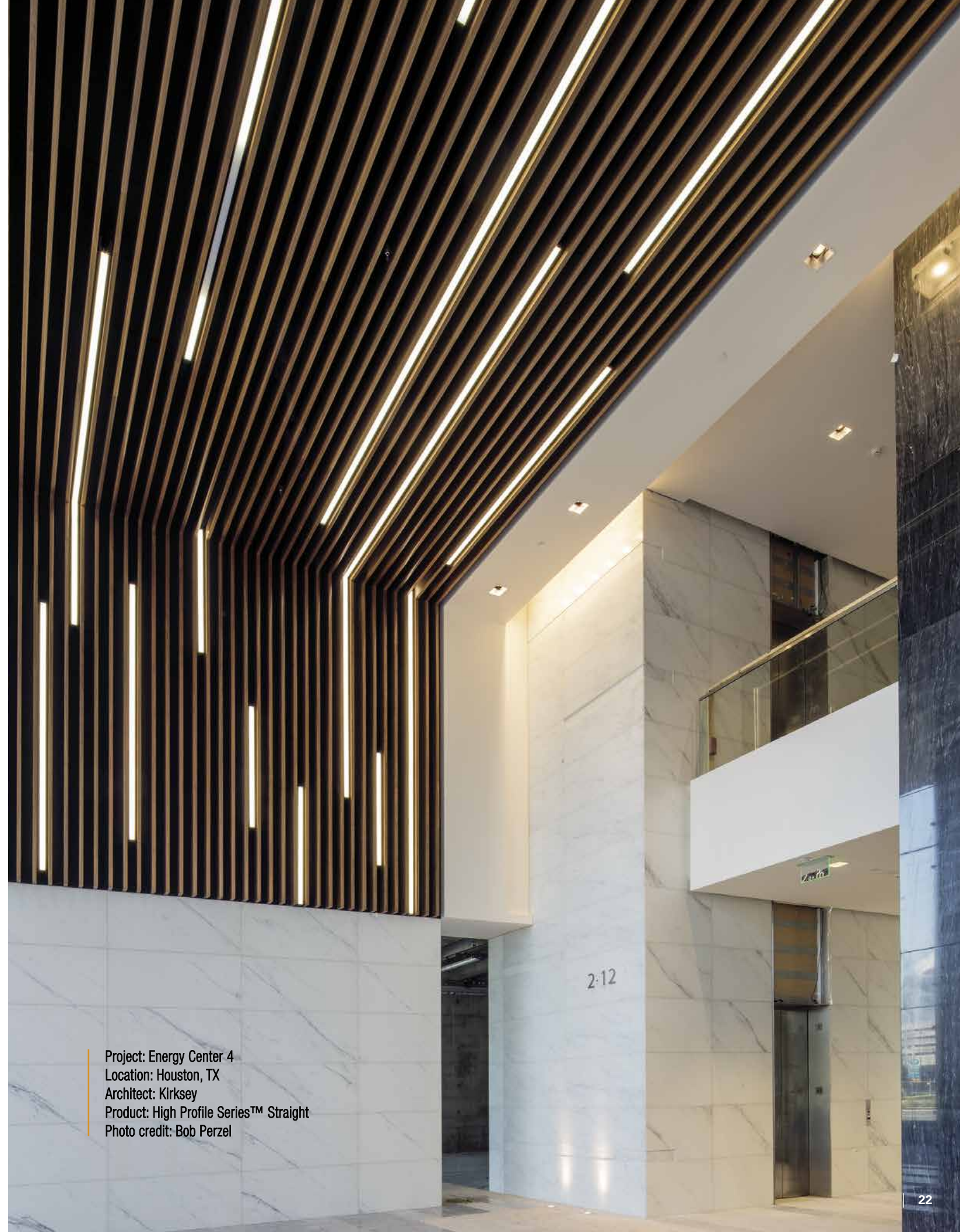
## Wilsonart\* | This collection features finishes (interior only) that coordinate easily with the other materials you specify. No minimum.



## DECORATED MASONRY OPTIONS\* | Powder-coat paint finish (interior and exterior). Formaldehyde-free, Class A composite panel.



\*Notes: Available for High Profile Series™ Straight only. Small subset of options shown.



Project: Energy Center 4  
 Location: Houston, TX  
 Architect: Kirksey  
 Product: High Profile Series™ Straight  
 Photo credit: Bob Perzel



Hunter Douglas Ceilings & Walls  
5015 Oakbrook Parkway, Suite 100  
Norcross, GA 30093  
800.366.4327  
CTSpecialtyCeilings.com

**HunterDouglas**   
Ceiling & Wall Products  
exclusively from CertainTeed