

# High Profile Series™ Straight Baffle Ceiling - Colors & Finishes

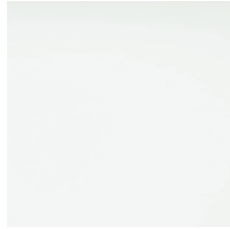
A wide choice of colors and finishes are available and some carry a premium price over manufacturer's standard colors. Custom color matching is available upon request. Minimum quantities and lead times may apply.

NOTE: Colors are for illustration purposes only.

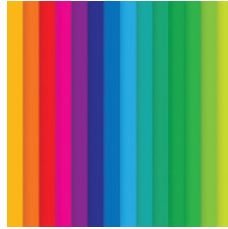
## Standard Paint Colors



NATURAL  
7163



COTTON WHITE  
0280

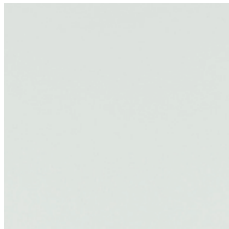


PREMIUM  
CUSTOM COLORS

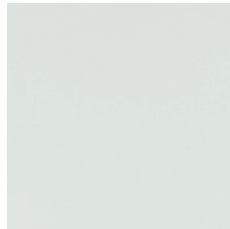
## White Finish Options

White Finish Options: Powder-coat paint finish for Arctic White #1015P (Gloss 10-20); Crystalline White #1050P (Gloss 45-55); Supernova White #1085P (Gloss 80-90).

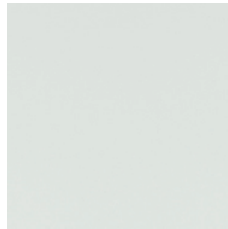
Performance White: Powder-coat paint finish offering LRV 96; non-glare, 3% low gloss finish. Certified by: Applied Technical Services, Inc. Test Report No. D233185. Test reports available by request.



ARCTIC WHITE  
1015P

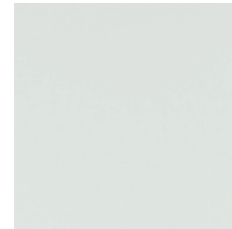


CRYSTALLINE  
WHITE  
1050P



SUPERNOVA  
WHITE  
1085P

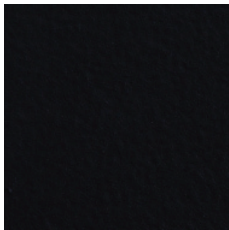
## Daylight Paint Finish



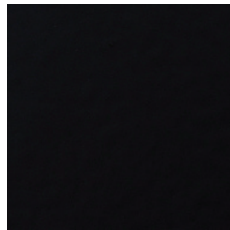
PERFORMANCE  
WHITE  
9603P

## Black Finish Options

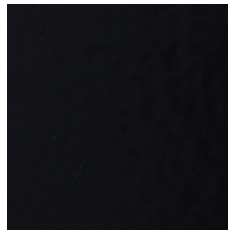
Powder-coat paint finish for Starless Black #5000P (Matte); Raven Black #5030P (Gloss-25-35); Sable Black #5060P (Gloss 65-75); Wet Glass Black #5095P (Gloss 90-95)



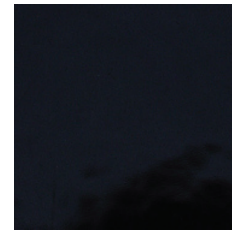
STARLESS  
BLACK  
5000P



RAVEN  
BLACK  
5030P



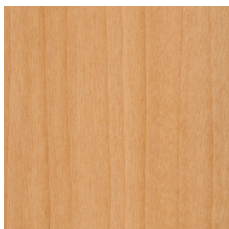
SABLE  
BLACK  
5060P



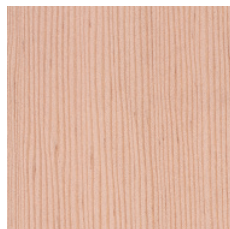
WET GLASS  
BLACK  
5095P

## Wood Veneer Options

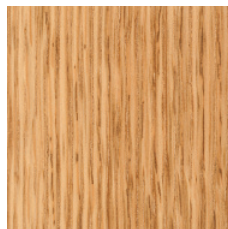
Real wood veneer (interior only). Formaldehyde-free, Class A composite panel. Note: This is a small subset of veneers available. Please contact us for client-specific species and stains. Pricing is subject to market availability.



ANIGRE (QTR)  
9122



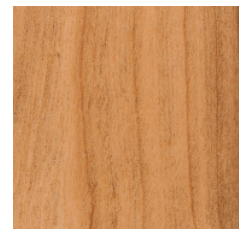
DOUGLAS FIR  
(VG)  
9005



WHITE OAK  
(RIFT)  
9003



MAPLE (FLAT)  
9427



CHERRY (FLAT)  
9013

## Wood Veneer Options (continued)



WALNUT (FLAT)  
9114

## Decorated Wood-Look Options

Powder-coat paint finish (interior and exterior). Formaldehyde-free, Class A composite panel. This finish is recommended for exterior conditions.



WHITEWASH  
8487



CARAVEL TEAK  
8460



REGATTA TEAK  
8461



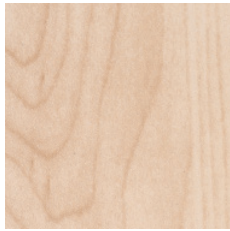
SUMMER MAPLE  
8465



TERRACE MAPLE  
8466



LIGHT PECAN  
8475



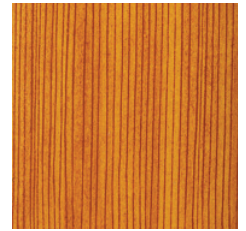
FARM MAPLE  
8458



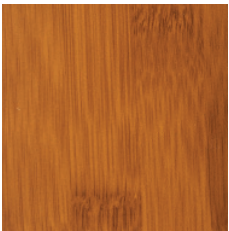
ANIGRE  
8453



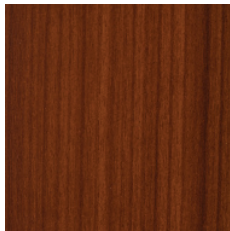
DOUGLAS FIR  
8452



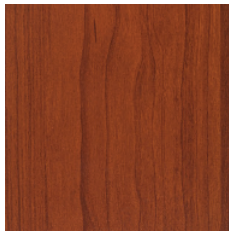
GOLDEN  
DOUGLAS FIR  
8436



AMBER BAMBOO  
8432



CHERRY  
8742



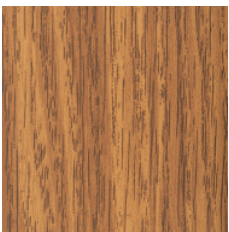
RUSTIC CHERRY  
8739



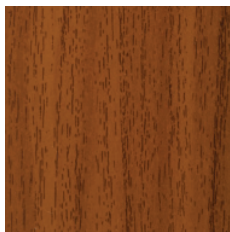
FONTHILL  
CHERRY  
8422



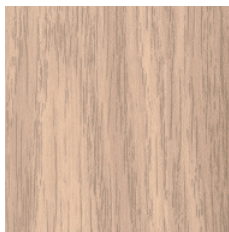
AMERICAN OAK  
8439



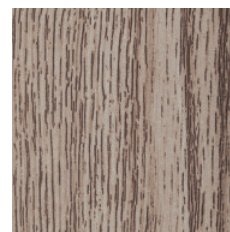
WINDJAMMER  
TEAK  
8449



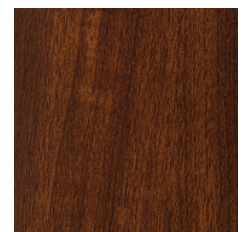
CRAZY CAJUN  
CYPRESS  
8442



CLIPPER TEAK  
8446

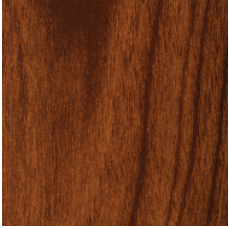


GREY  
BARNWOOD  
CEDAR  
8434

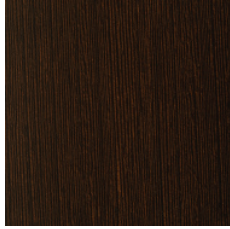


SWAMP CYPRESS  
8444

### Decorated Wood-Look Options (continued)



WALNUT  
8424



FINE WENGE  
8433



NORTHEAST  
MOUNTAIN  
HEMLOCK  
8486



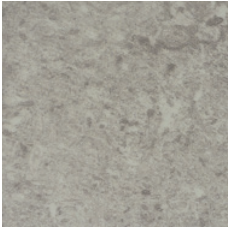
PENSHAW  
CHERRY  
8481



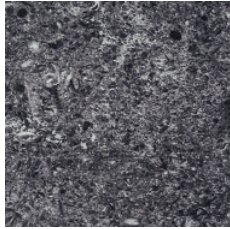
WHITE OAK  
8491

### Decorated Masonry Options

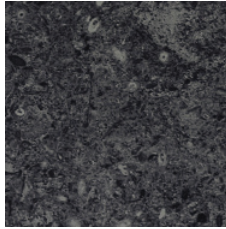
Powder-coat paint finish (interior and exterior). Formaldehyde-free, Class A composite panel.  
This finish is recommended for exterior conditions.



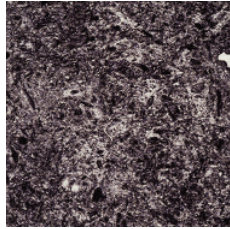
PLAIN MASONRY  
8603



GREY MASONRY  
8604



BLACK MASONRY  
8605



BLACK CHERRY  
MASONRY  
8606



# High Profile Series™ Frameworks - Colors & Finishes

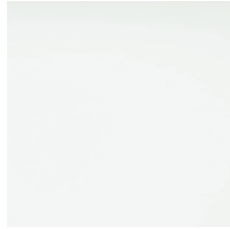
A wide choice of colors and finishes are available and some carry a premium price over manufacturer's standard colors. Custom color matching is available upon request. Minimum quantities and lead times may apply.

NOTE: Colors are for illustration purposes only.

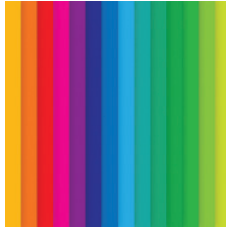
## Standard Paint Colors



NATURAL  
7163



COTTON WHITE  
0280

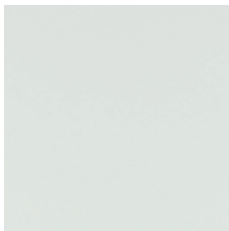


PREMIUM  
CUSTOM COLORS

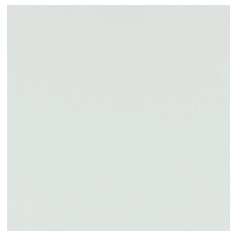
## White Finish Options

White Finish Options: Powder-coat paint finish for Arctic White #1015P (Gloss 10-20); Crystalline White #1050P (Gloss 45-55); Supernova White #1085P (Gloss 80-90).

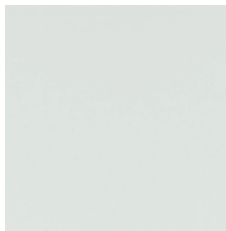
Performance White: Powder-coat paint finish offering LRV 96; non-glare, 3% low gloss finish. Certified by: Applied Technical Services, Inc. Test Report No. D233185. Test reports available by request.



ARCTIC WHITE  
1015P

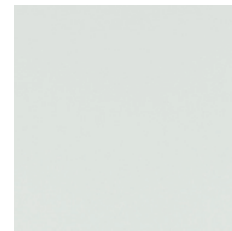


CRYSTALLINE  
WHITE  
1050P



SUPERNOVA  
WHITE  
1085P

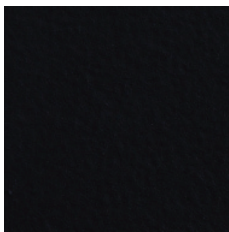
## Daylight Paint Finish



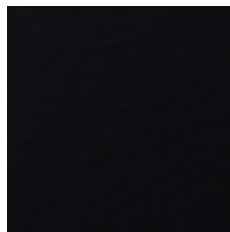
PERFORMANCE  
WHITE  
9603P

## Black Finish Options

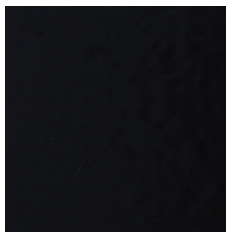
Powder-coat paint finish for Starless Black #5000P (Matte); Raven Black #5030P (Gloss-25-35); Sable Black #5060P (Gloss 65-75); Wet Glass Black #5095P (Gloss 90-95)



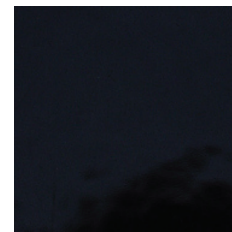
STARLESS  
BLACK  
5000P



RAVEN  
BLACK  
5030P



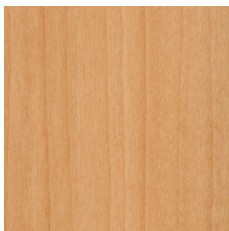
SABLE  
BLACK  
5060P



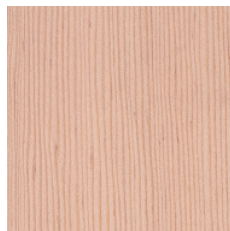
WET GLASS  
BLACK  
5095P

## Wood Veneer Options

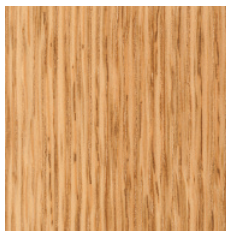
Real wood veneer (interior only). Formaldehyde-free, Class A composite panel. Note: This is a small subset of veneers available. Please contact us for client-specific species and stains. Pricing is subject to market availability.



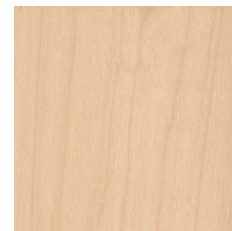
ANIGRE (QTR)  
9122



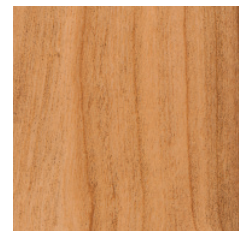
DOUGLAS FIR  
(VG)  
9005



WHITE OAK  
(RIFT)  
9003



MAPLE (FLAT)  
9427



CHERRY (FLAT)  
9013

## Wood Veneer Options (continued)



WALNUT (FLAT)  
9114

## Decorated Wood-Look Options

Powder-coat paint finish (interior and exterior). Formaldehyde-free, Class A composite panel. This finish is recommended for exterior conditions.



WHITEWASH  
8487



CARAVEL TEAK  
8460



REGATTA TEAK  
8461



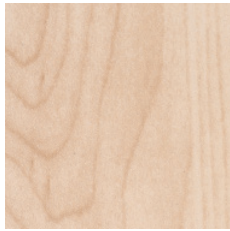
SUMMER MAPLE  
8465



TERRACE MAPLE  
8466



LIGHT PECAN  
8475



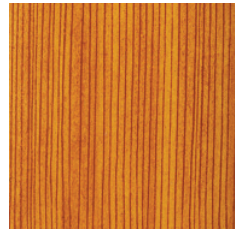
FARM MAPLE  
8458



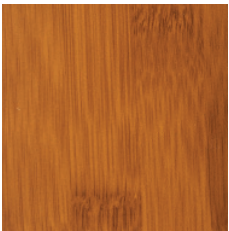
ANIGRE  
8453



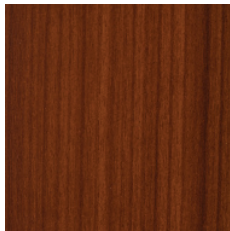
DOUGLAS FIR  
8452



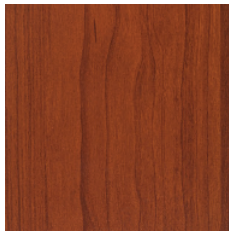
GOLDEN  
DOUGLAS FIR  
8436



AMBER BAMBOO  
8432



CHERRY  
8742



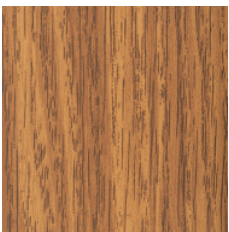
RUSTIC CHERRY  
8739



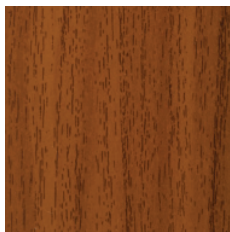
FONTHILL  
CHERRY  
8422



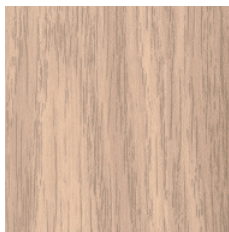
AMERICAN OAK  
8439



WINDJAMMER  
TEAK  
8449



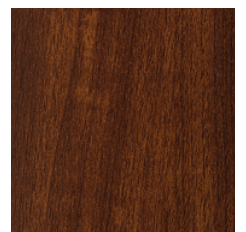
CRAZY CAJUN  
CYPRESS  
8442



CLIPPER TEAK  
8446

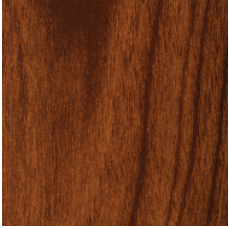


GREY  
BARNWOOD  
CEDAR  
8434

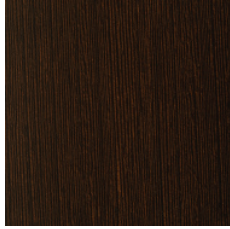


SWAMP CYPRESS  
8444

### Decorated Wood-Look Options (continued)



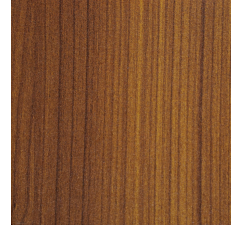
**WALNUT**  
8424



**FINE WENGE**  
8433



**NORTHEAST  
MOUNTAIN  
HEMLOCK**  
8486



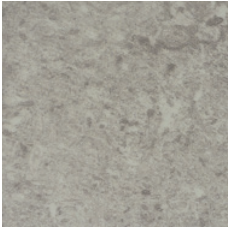
**PENSHAW  
CHERRY**  
8481



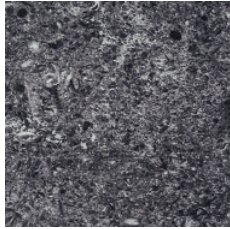
**WHITE OAK**  
8491

### Decorated Masonry Options

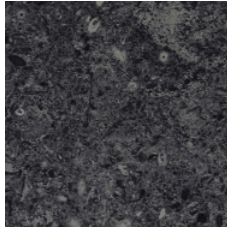
Powder-coat paint finish (interior and exterior). Formaldehyde-free, Class A composite panel.  
This finish is recommended for exterior conditions.



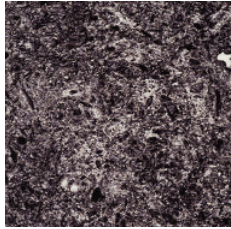
**PLAIN MASONRY**  
8603



**GREY MASONRY**  
8604



**BLACK MASONRY**  
8605



**BLACK CHERRY  
MASONRY**  
8606



# High Profile Series™ - Horizontally Curved Baffles - Colors & Finishes

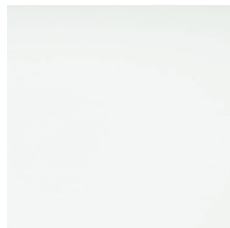
A wide choice of colors and finishes are available and some carry a premium price over manufacturer's standard colors. Custom color matching is available upon request. Minimum quantities and lead times may apply.

NOTE: Colors are for illustration purposes only.

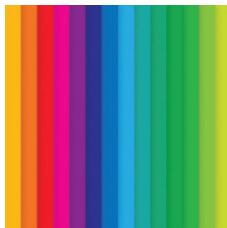
## Standard Paint Colors



NATURAL  
7163



COTTON WHITE  
0280

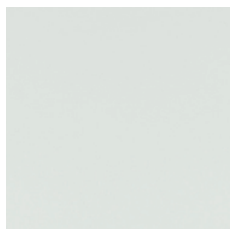


PREMIUM  
CUSTOM COLORS

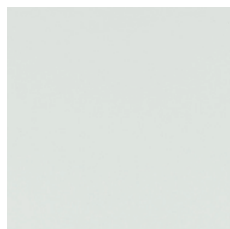
## White Finish Options

White Finish Options: Powder-coat paint finish for Arctic White #1015P (Gloss 10-20); Crystalline White #1050P (Gloss 45-55); Supernova White #1085P (Gloss 80-90).

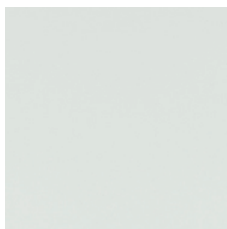
Performance White: Powder-coat paint finish offering LRV 96; non-glare, 3% low gloss finish. Certified by: Applied Technical Services, Inc. Test Report No. D233185. Test reports available by request.



ARCTIC WHITE  
1015P

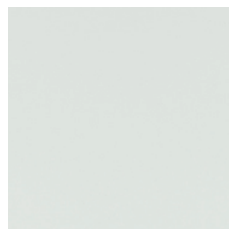


CRYSTALLINE  
WHITE  
1050P



SUPERNOVA  
WHITE  
1085P

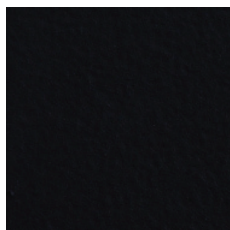
## Daylight Paint Finish



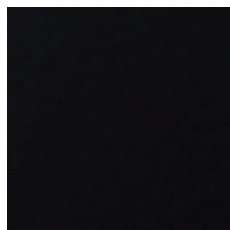
PERFORMANCE  
WHITE  
9603P

## Black Finish Options

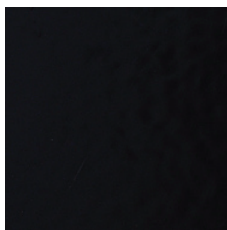
Powder-coat paint finish for Starless Black #5000P (Matte); Raven Black #5030P (Gloss-25-35); Sable Black #5060P (Gloss 65-75); Wet Glass Black #5095P (Gloss 90-95)



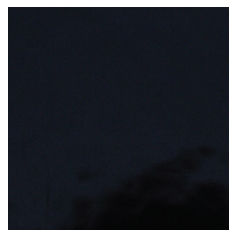
STARLESS  
BLACK  
5000P



RAVEN  
BLACK  
5030P



SABLE  
BLACK  
5060P



WET GLASS  
BLACK  
5095P

# High Profile Series™ - Vertically Curved Baffles - Colors & Finishes

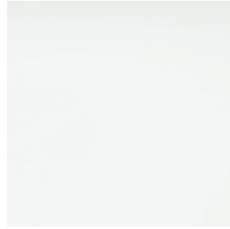
A wide choice of colors and finishes are available and some carry a premium price over manufacturer's standard colors. Custom color matching is available upon request. Minimum quantities and lead times may apply.

NOTE: Colors are for illustration purposes only.

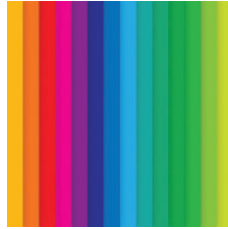
## Standard Paint Colors



**NATURAL**  
7163



**COTTON WHITE**  
0280

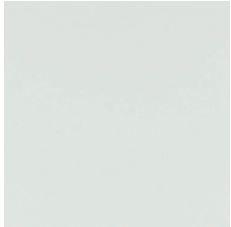


**PREMIUM  
CUSTOM COLORS**

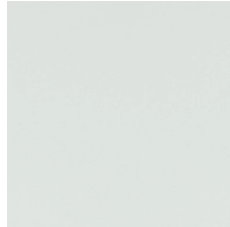
## White Finish Options

White Finish Options: Powder-coat paint finish for Arctic White #1015P (Gloss 10-20); Crystalline White #1050P (Gloss 45-55); Supernova White #1085P (Gloss 80-90).

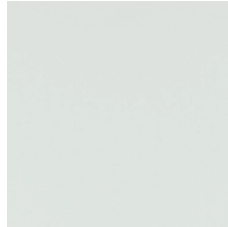
Performance White: Powder-coat paint finish offering LRV 96; non-glare, 3% low gloss finish. Certified by: Applied Technical Services, Inc. Test Report No. D233185. Test reports available by request.



**ARCTIC WHITE**  
1015P

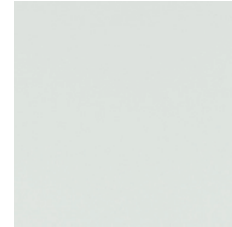


**CRYSTALLINE  
WHITE**  
1050P



**SUPERNOVA  
WHITE**  
1085P

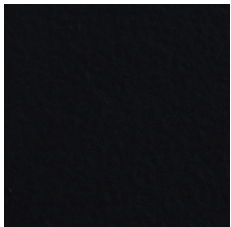
## Daylight Paint Finish



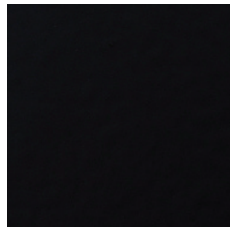
**PERFORMANCE  
WHITE**  
9603P

## Black Finish Options

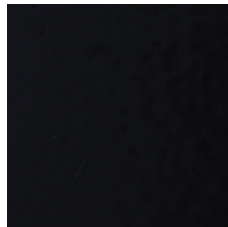
Powder-coat paint finish for Starless Black #5000P (Matte); Raven Black #5030P (Gloss-25-35); Sable Black #5060P (Gloss 65-75); Wet Glass Black #5095P (Gloss 90-95)



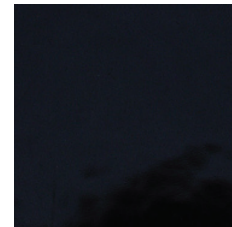
**STARLESS  
BLACK**  
5000P



**RAVEN  
BLACK**  
5030P



**SABLE  
BLACK**  
5060P



**WET GLASS  
BLACK**  
5095P